

POST HOLDERS

To mount the Timberlab products on, for example, a deck, concrete foundation, tile or roof terrace, an extensive range of post holders and foundation elements is available to choose from. Above-ground mounting also has a positive effect on the lifespan of the Timberlab products.

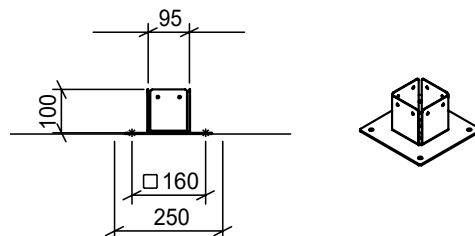
PH02

Post holder 100 with flange

Models: EYE 100, PERI 100, TORRE 100 & SPINA 100

Material: Stainless steel 316

Weight: 3 kg



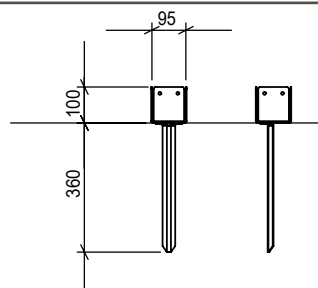
PH03

Post holder 100 with spike

Models: EYE 100, PERI 100, TORRE 100 & SPINA 100

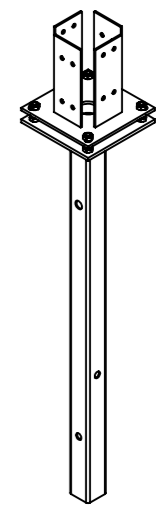
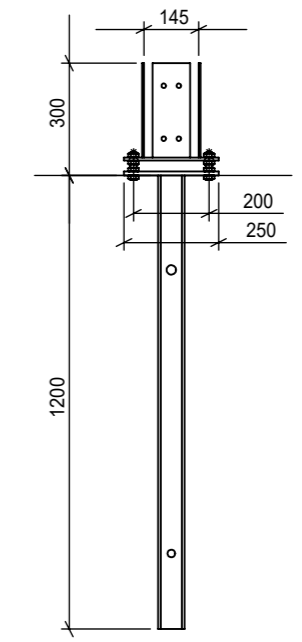
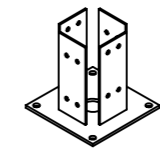
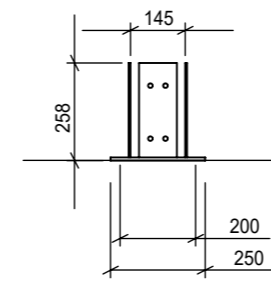
Material: Stainless steel 316

Weight: 2 kg



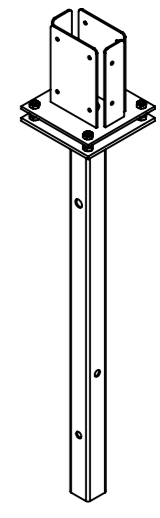
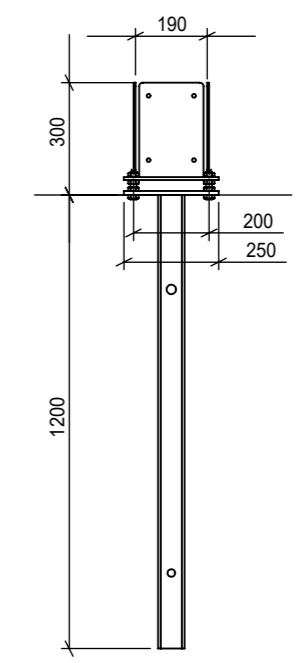
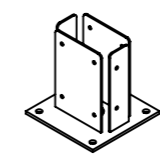
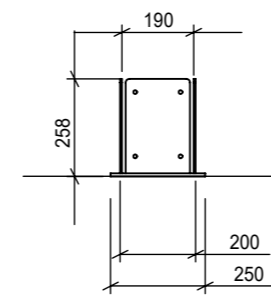


Post holder PH03



PH07
 Post holder lamp post
 Models: STRATO, STELLE, ANGELO & PILA
 Material: Galvanised steel
 Weight: 7 kg

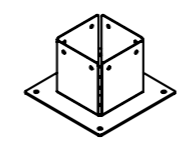
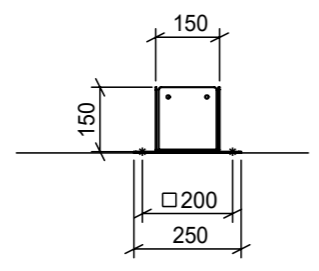
PH08
 Post holder
 Models: STRATO, STELLE, ANGELO & PILA
 Material: Galvanised steel
 Weight: 20 kg



PH09
 Post holder RIPARO
 Models: RIPARO
 Material: Stainless steel 316
 Weight: 7 kg

PH10
 Post holder RIPARO
 Models: RIPARO
 Material: Stainless steel 316
 Weight: 20 kg

PH05
 Post holder 150 with flange
 Models: EYE 150, PERI 150, SPINA 150
 TORRE 150 & FARO
 Material: Stainless steel 316
 Weight: 4 kg



PH06
 Post holder (per 3)
 Models: BOSCO, BOSCO SOLAR, PIATTO, PIATTO-solar, BASSO,
 SOTTO, SPINA 100&150, PERI 100&150, TORRE 100&150,
 TORRE-solar, EYE 100&150, EYE-solar & CARICO
 Material: Stainless steel 316
 Weight: 2 kg

